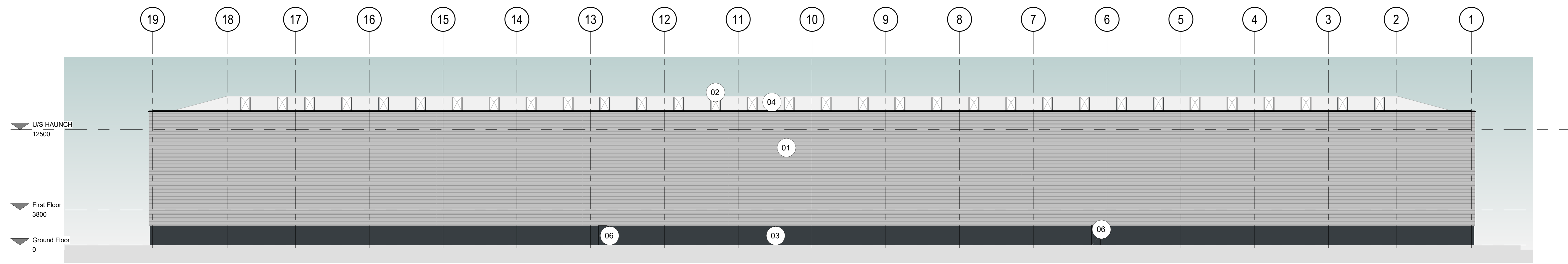


General Notes

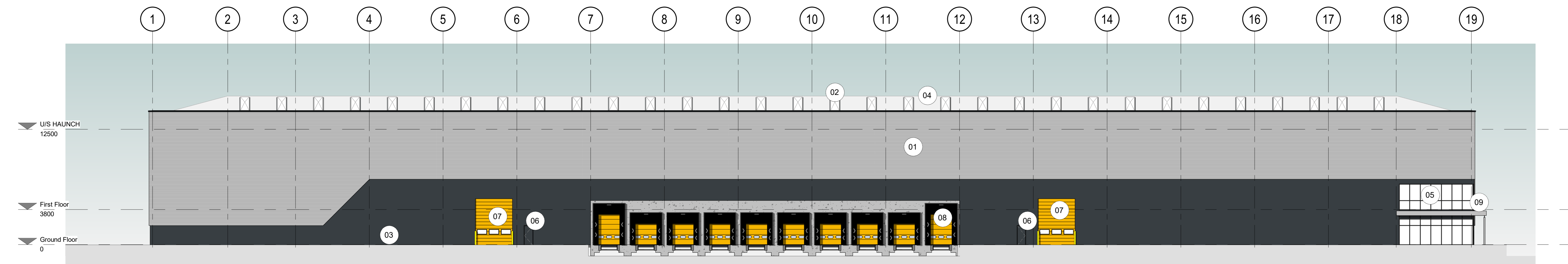
Do not scale from this drawing. Only work to written dimensions.
 All site dimensions shall be verified by the Contractor on site prior to commencing any works.
 This drawing is the property of Fletcher-Rae (UK) Limited (F/R Fletcher-Rae) and copyright is reserved by them. The drawing is not to be copied or disclosed by or to any unauthorised persons without the prior written consent of Fletcher-Rae (UK) Limited.

Materials Key:

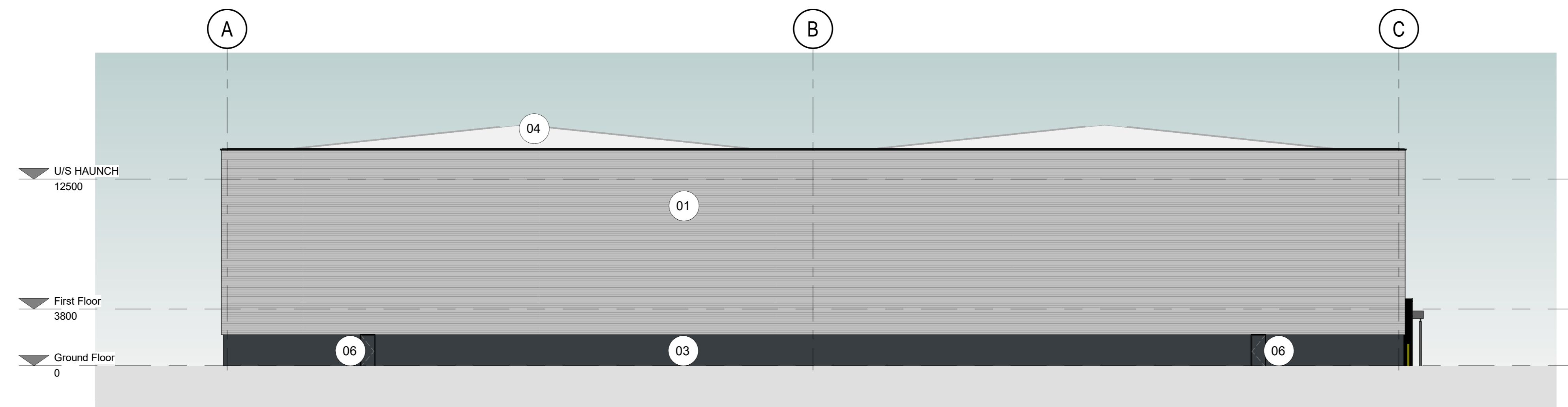
- 01 Profiled metal cladding horizontally laid
Colour: RAL 9006 (Light Grey/Silver)
- 02 Rooflights
- 03 Micro rib metal cladding vertically laid
Colour: RAL 7016 (Antracite)
- 04 Profile metal roof cladding
Colour: RAL 7038 (Goosewing Grey)
- 05 PPC aluminium curtain walling with aluminium spandrel panels
Frame colour: RAL 7016 (Antracite)
Spandrel colour: RAL 7016 (Antracite)
- 06 Insulated steel personnel door
Colour: RAL 7016 (Antracite)
- 07 Level access loading door
Colour: Yellow
- 08 Dock Leveller loading door with dark grey dock shelter
Colour: Yellow
- 09 Canopy over main entrance doors
PPC Aluminium Louvre
Colour: To match adjacent cladding



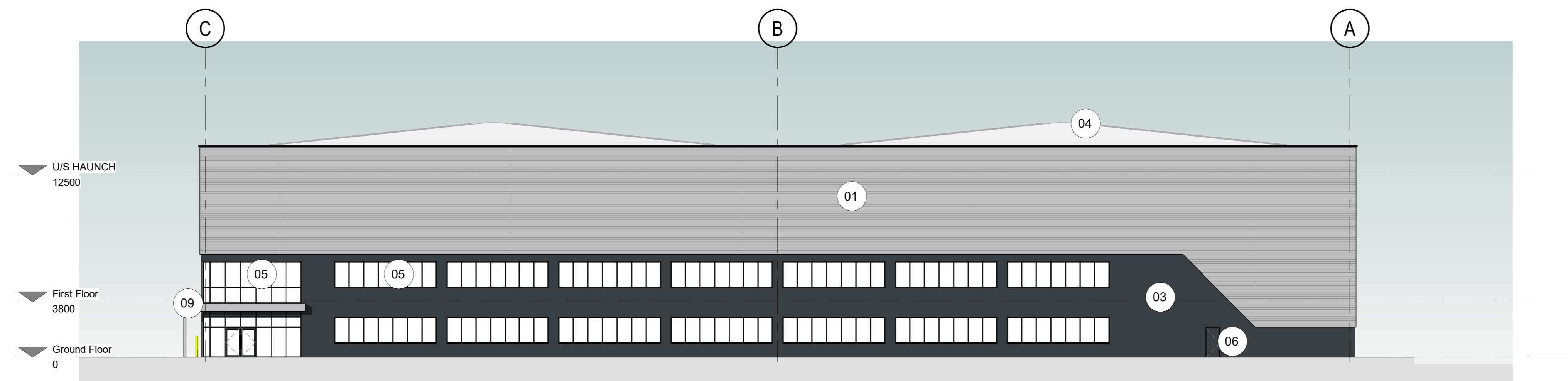
East Elevation
1:200



West Elevation
1:200



North Elevation
1:200



South Elevation
1:200

Rev.	Description	Date	By	App.
P2	Planning Issue	16.12.21	AL	AT
P2	First Issue	03.12.21	AL	AT

Scale: As indicated @ A0
 Status: S2 Information
 Drawn By: AL
 Checked By: AT
 Date: 03.12.21
 Client: Redsun Projects Ltd

Redsun Projects Ltd
 Project: Hortonwood 45 Telford
 Sheet Name: Unit 3 - Proposed GA Elevations

Project No: 21018-FRA-V3-XX-DR-A-20-0004 P2

fletcher|rae
 Architects | Master Planners | Designers
 Hill Quays, 5 Jordan Street, Manchester, M15 4PP

t +44 (0) 161 242 1160
 w www.fletcher-rae.com
 e info@fletcher-rae.com

